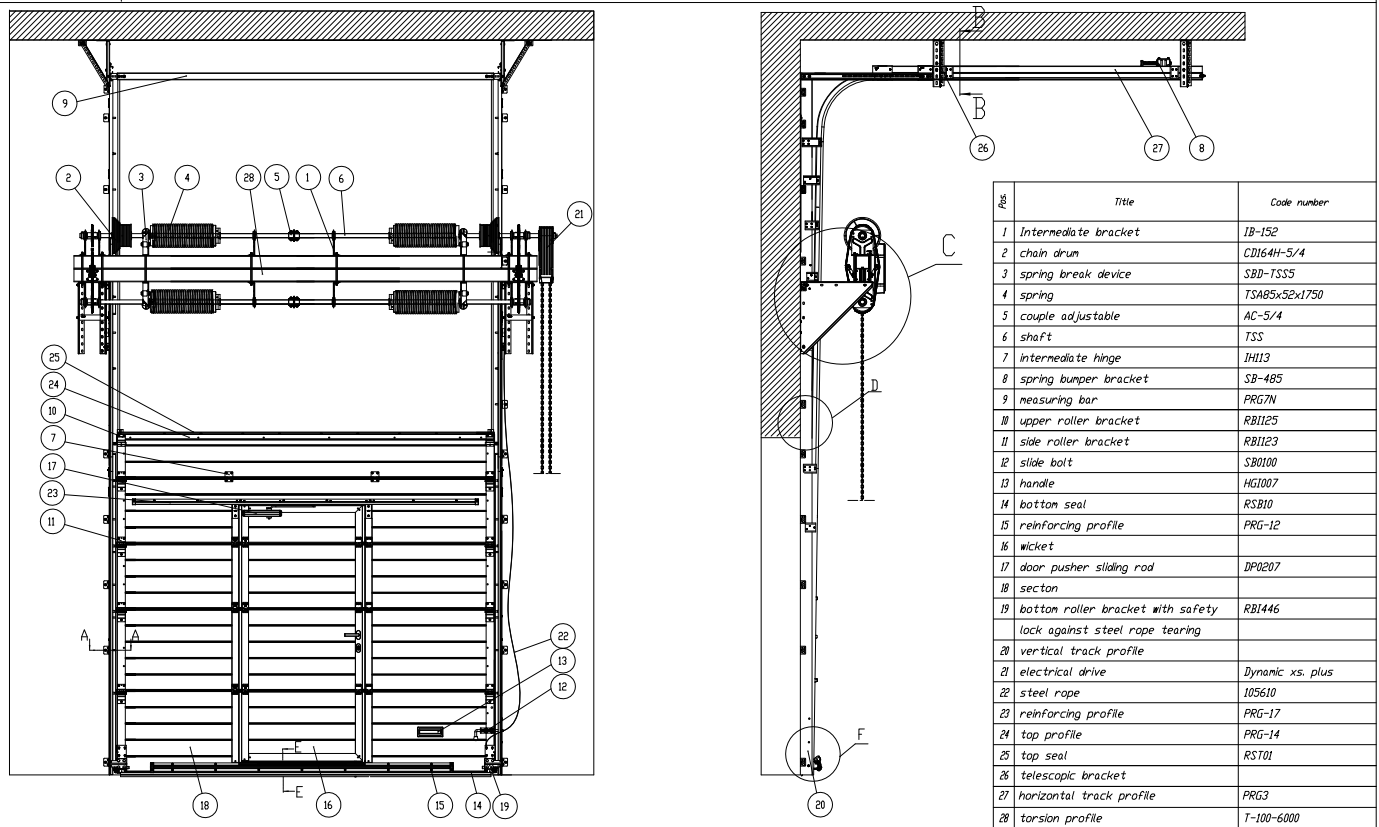


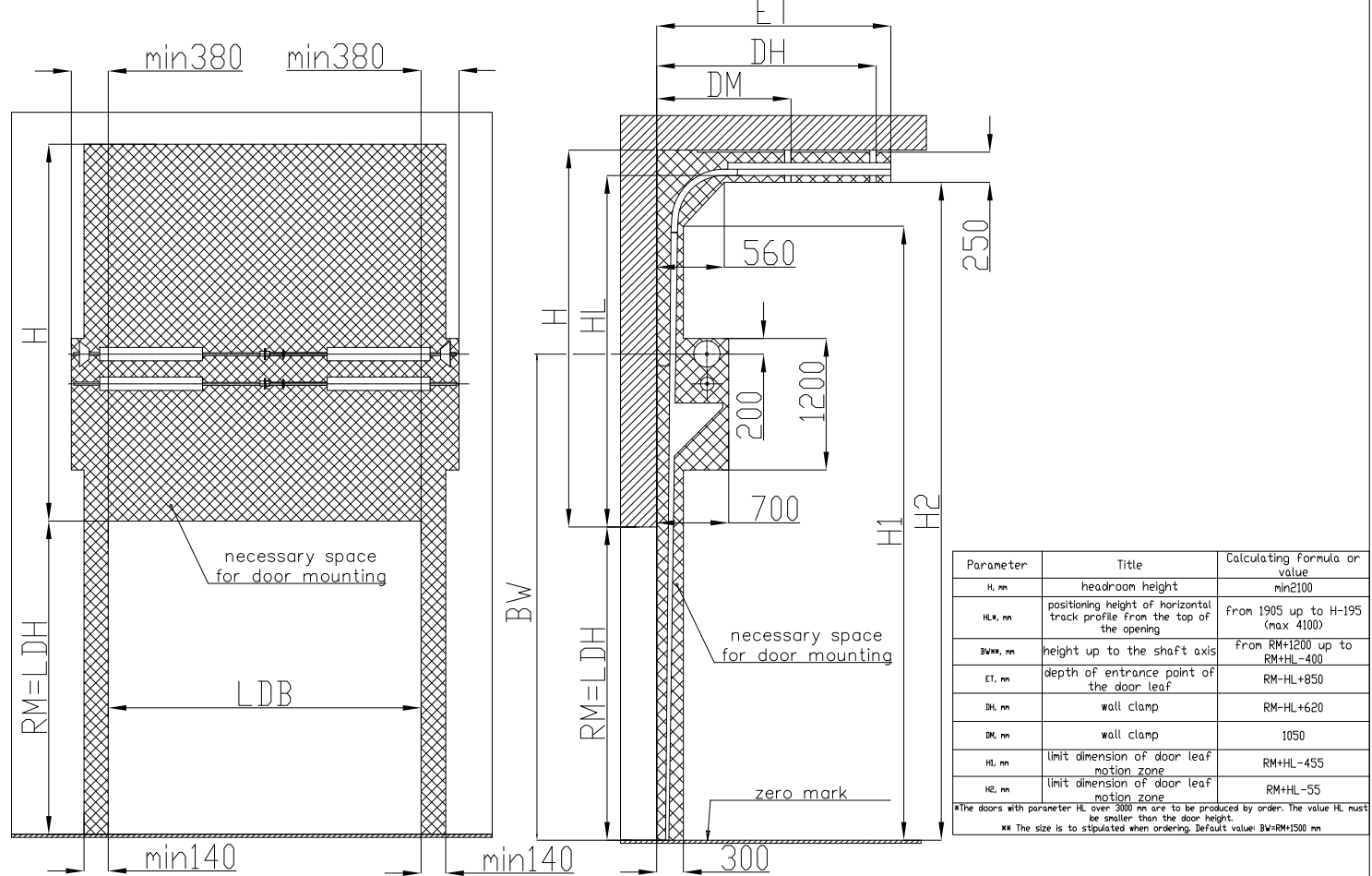
Industrial doors

High mounting with bottom shaft positioning. Two-shaft balance system

Description of door construction with a wicket

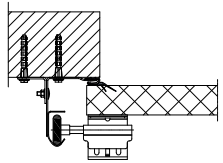


Mounting drawing of the door

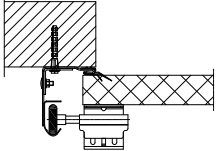


A(5:1) Mounting types of vertical track profiles:

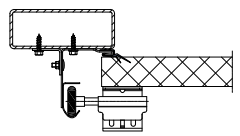
a) mounting to the wall, triangular plate B0300 outside vertical track profile



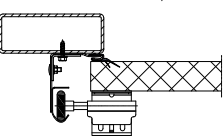
b) mounting to the wall, triangular plate B0300 inside vertical track profile



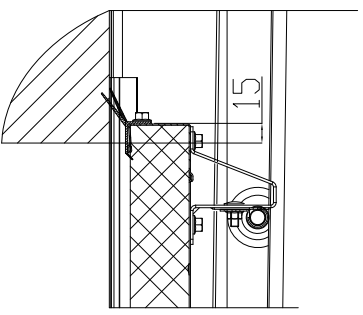
c) mounting to the tube, triangular plate B0300 outside vertical track profile



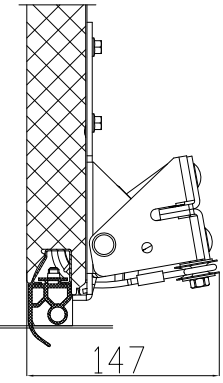
d) mounting to the tube, triangular plate B0300 inside vertical track profile



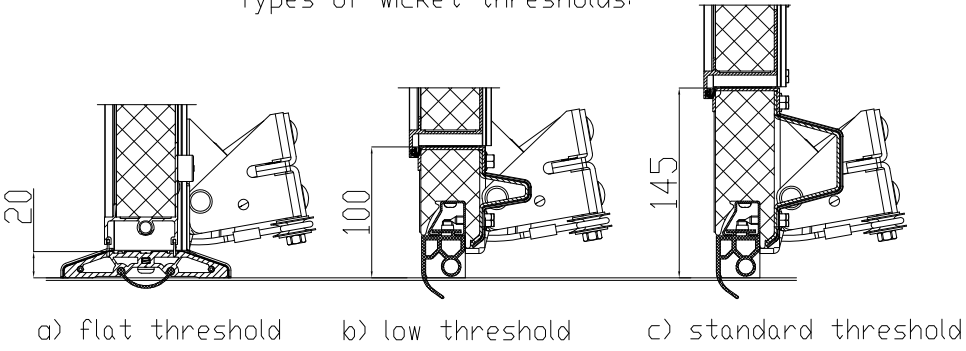
D(10:1) place of door leaf adjoining to the headroom



F(10:1)



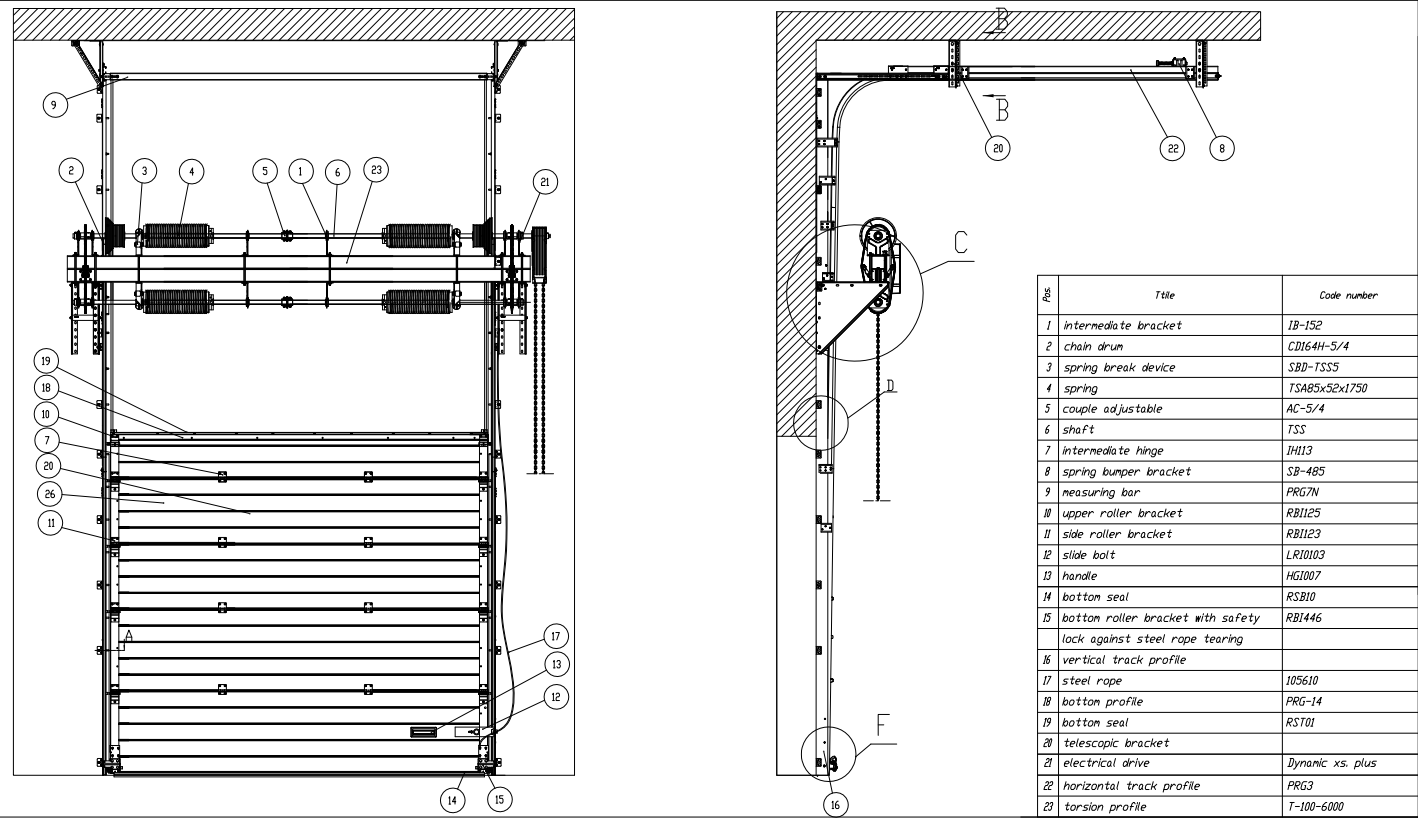
E(10:1) Types of wicket thresholds:



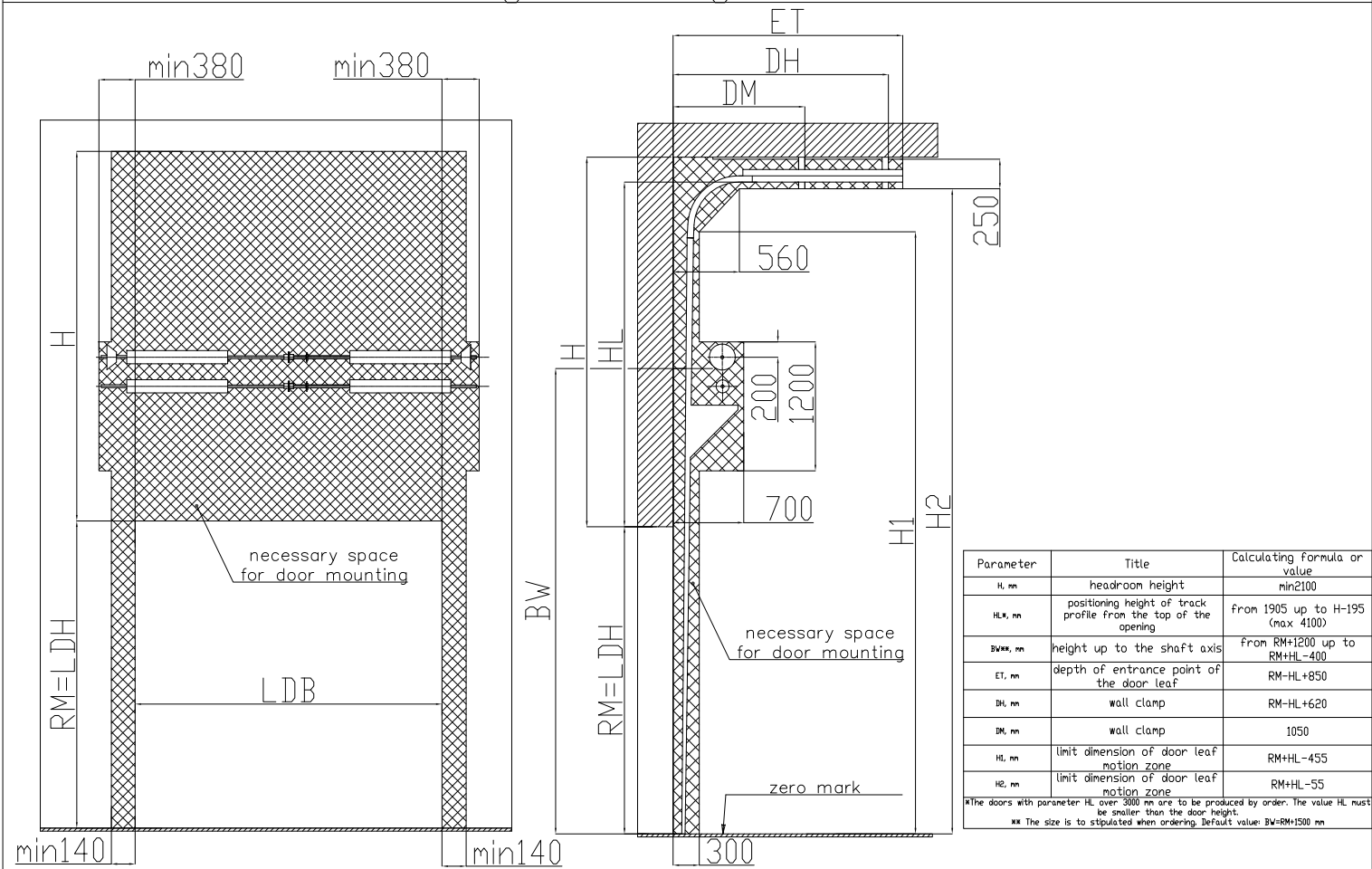
Industrial doors

High mounting with bottom shaft positioning. Two-shaft balance system

Description of door construction without wicket



Mounting drawing of the door



A(5:1)

Types of mounting of vertical track profiles

a) mounting to the wall, angle outside vertical track profil

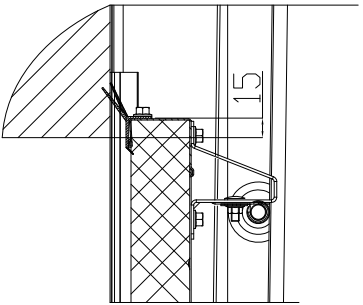
b) mounting to the wall, angle inside vertical track profil

c) mounting to the tubel, angle outside vertical track profil

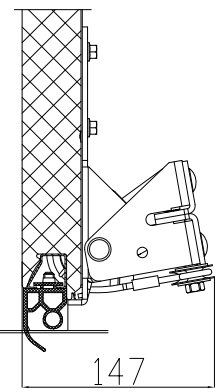
d) mounting to the tubel, angle inside vertical track profil

D(10:1)

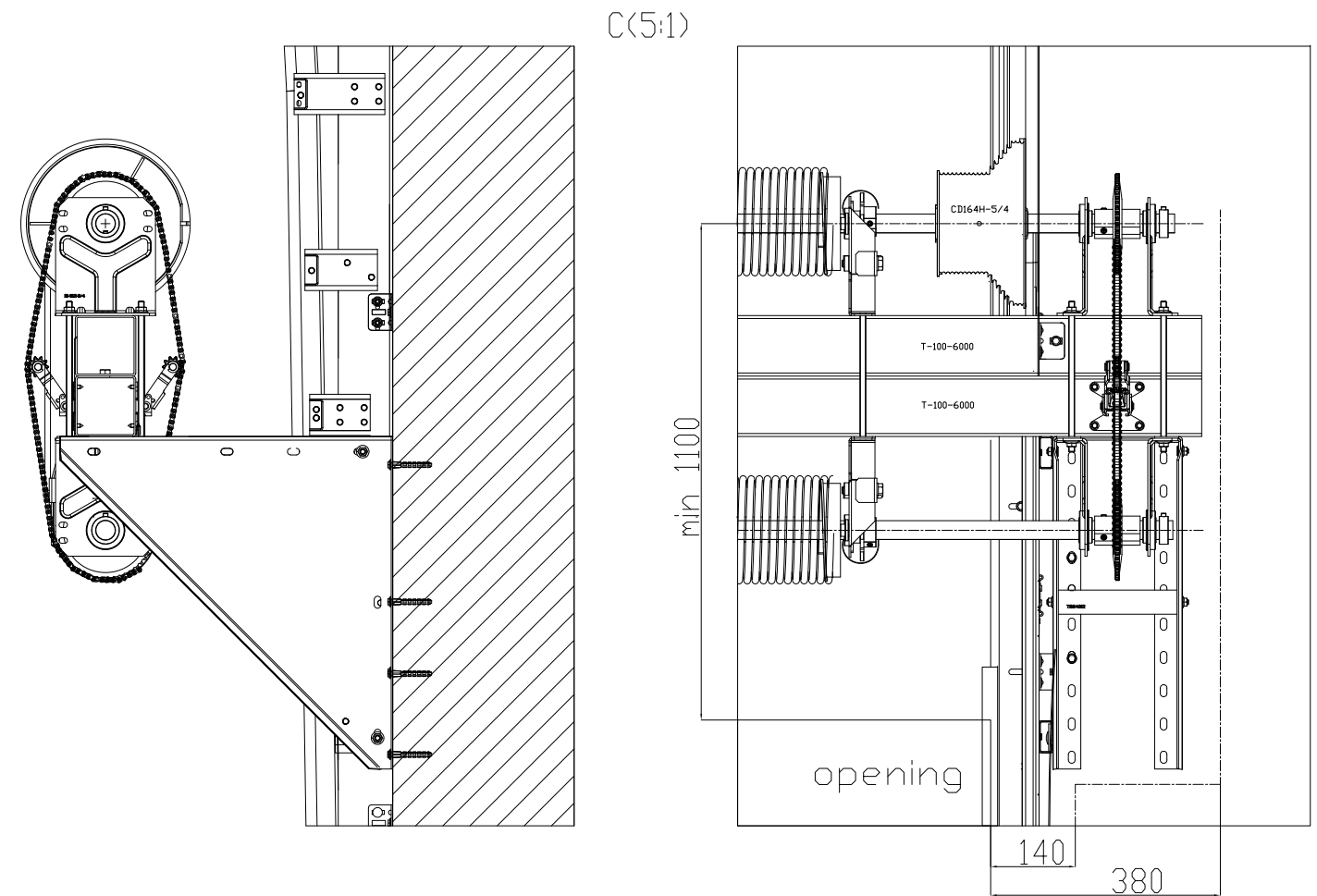
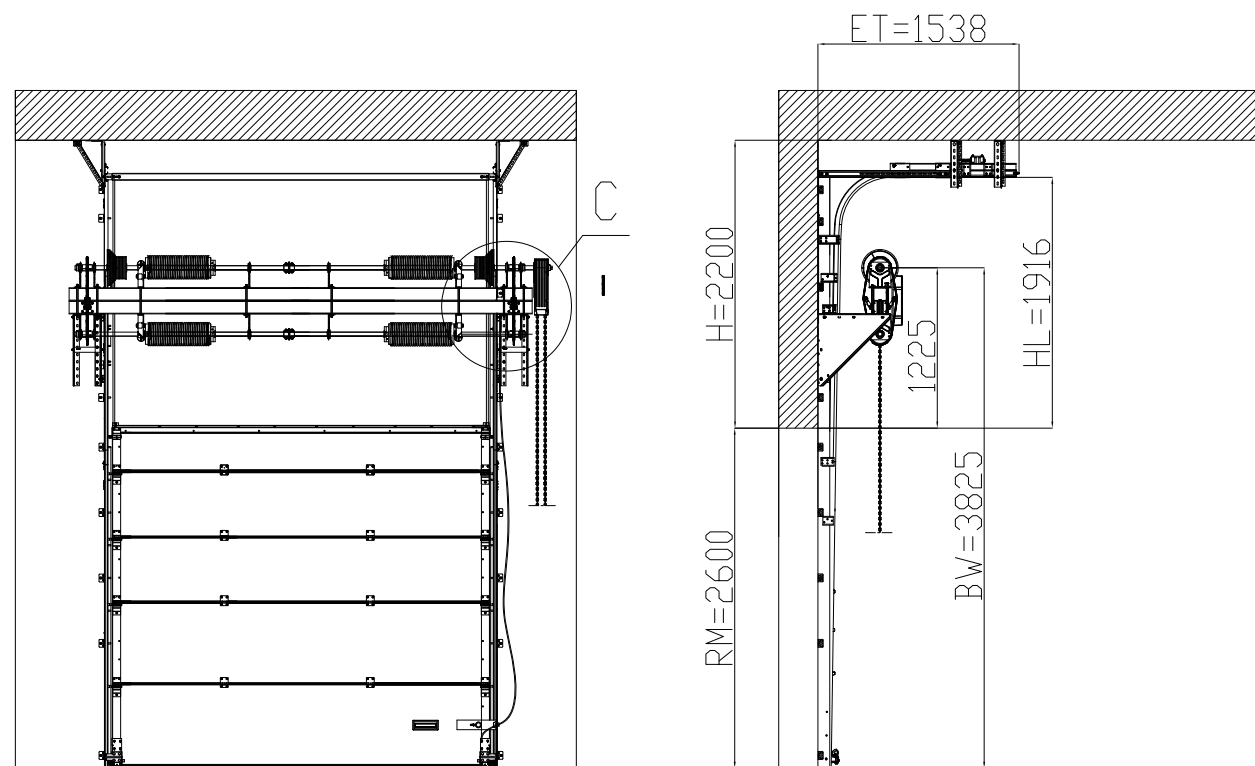
place of door leaf adjoining to the headroom



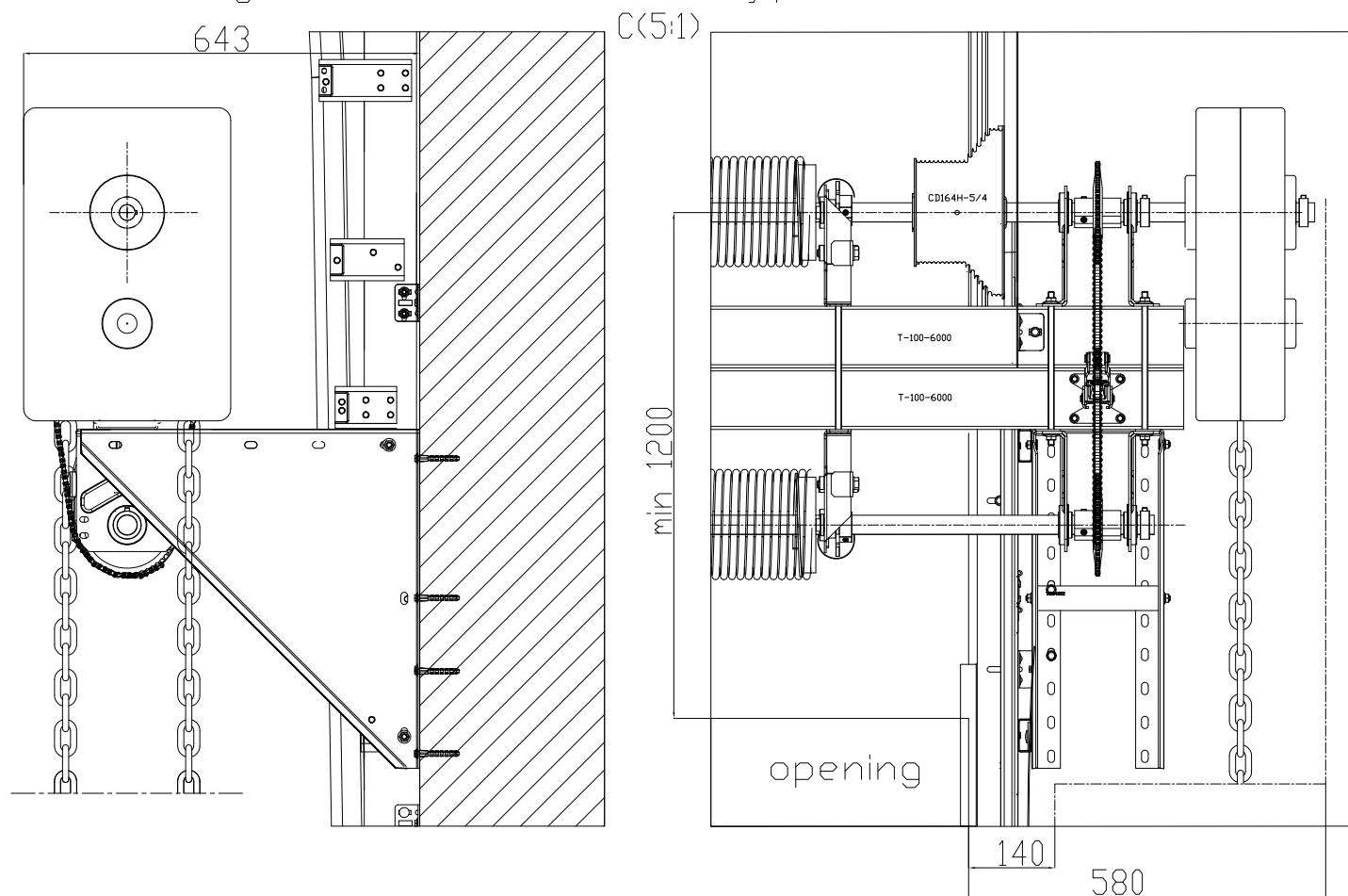
F(10:1)



Opening height 2600 mm, headroom height min2200 mm.



Additional parameters of the opening when using a chain drive of type CH0501.



Additional parameters of the opening when using an electrical drive fixed on the door shaft

